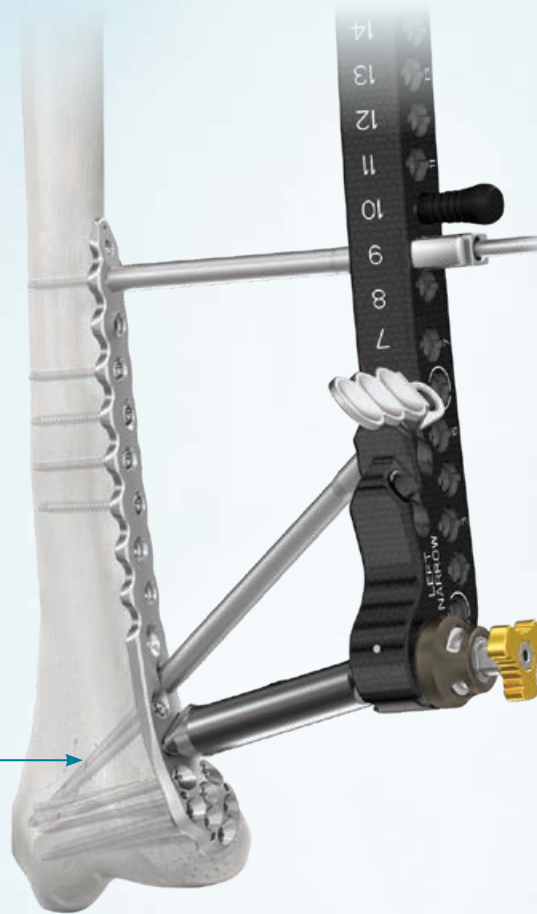


ANTHEM[®]

Distal Femur Fracture System



Percutaneous Targeting

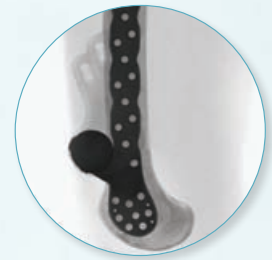
For shaft and kickstand holes to help reduce incision size

Dual Kickstand Screws

Multiple points of support for the medial condyle with laterally based plates

Radiolucent Aiming Arm

Designed for unobstructed lateral imaging

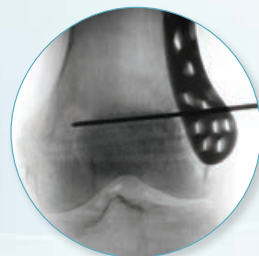


Anatomic Contour

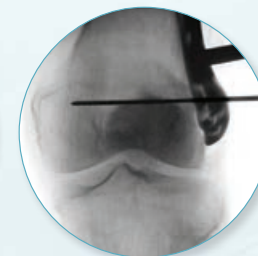
Optimal fit to minimize intraoperative contouring and hardware prominence



Broad Lateral Plate



Narrow Lateral Plate

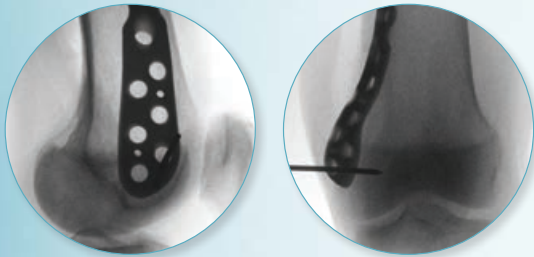


ANTHEM[®]

Distal Femur Fracture System

The ANTHEM[®] Distal Femur Fracture System provides low-profile, anatomically contoured plates in a comprehensive set to treat a variety of distal femur fractures. Streamlined instruments are designed to simplify open and minimally invasive techniques.

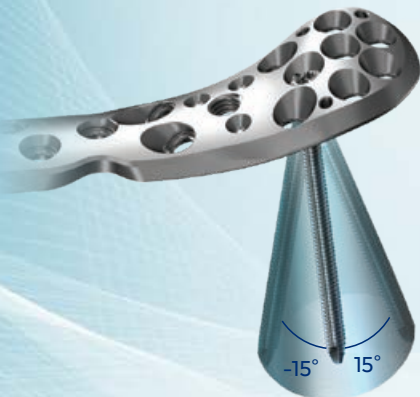
Anatomically Contoured Medial Locking Plate



Medial Plate

Polyaxial Design

±15° (30° cone) of angulation
in every locking hole



Nominal Screw Trajectories

Designed to eliminate screw
interference for the following:



Broad Lateral
Up to 105mm
screw lengths



Narrow Lateral
Up to 95mm
screw lengths



Medial
Up to 105mm
screw lengths

