



GLOBUS
MEDICAL



ANTHEM[®]

Distal Femur Fracture System

ANTHEM[®]

Distal Femur Fracture System

The ANTHEM[®] Distal Femur Fracture System offers anatomically contoured plates in a comprehensive set to treat a variety of distal femur fractures.

The system features Broad and Narrow Lateral Locking Plates and a Medial Locking Plate with abundant fixation options. The lateral plates have dual kickstand screws to offer additional support to the medial condyle. Robust polyaxial locking screws allow for $\pm 15^\circ$ (30° cone) of angulation.

Streamlined and radiolucent instruments simplify the minimally invasive lateral locked plating technique.

COMPREHENSIVE ANATOMIC PLATING PORTFOLIO



Narrow Lateral
Locking Plate



Broad Lateral
Locking Plate

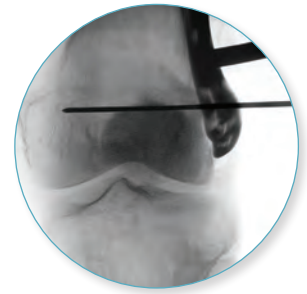
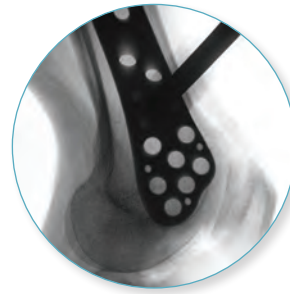
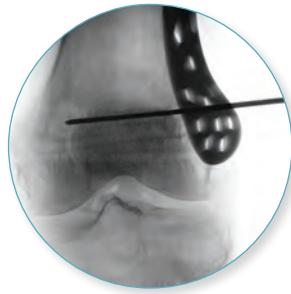
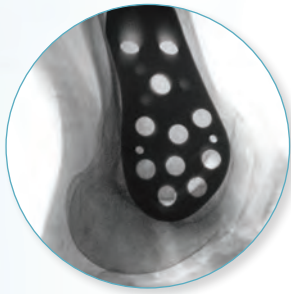


Medial
Locking Plate



ANATOMIC CONTOUR

- Designed to complement the natural shape of the distal femur to help reduce implant prominence and intraoperative contouring
- Plate is designed to sit anterior to Blumensaat's line and proximal to the trochlea

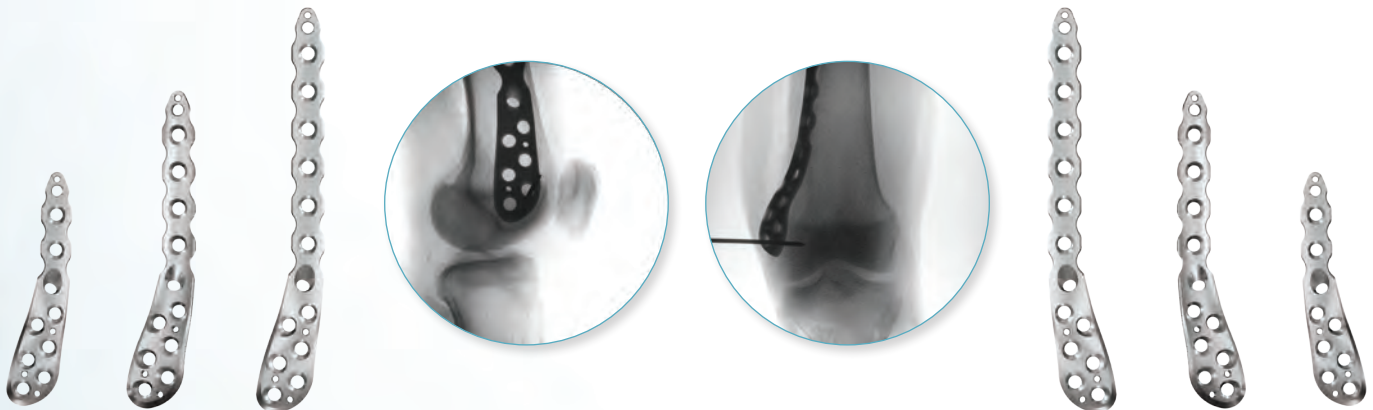


Broad Lateral Plate

Narrow Lateral Plate

MEDIAL PLATE

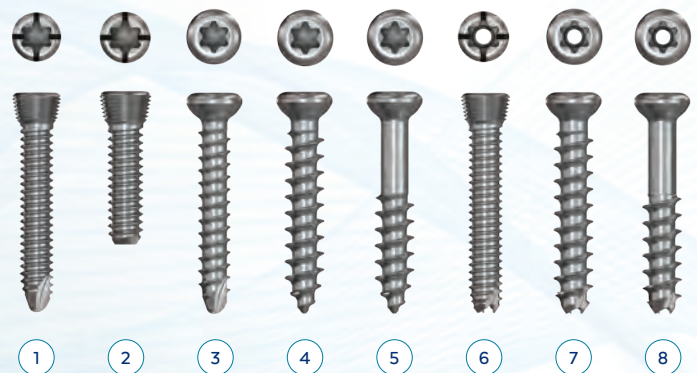
- Polyaxial locking medial distal femur plate designed to sit anteromedially
- Three length options available, with the longest plate designed to end beneath the femoral artery



NUMEROUS IMPLANT OPTIONS

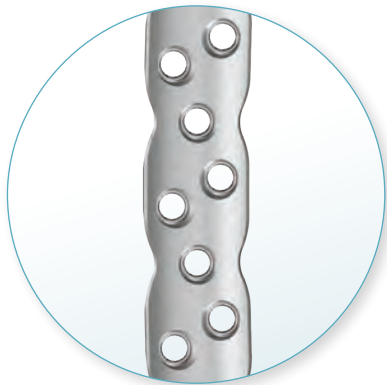
- Two lateral styles and one medial distal femur plate available in every set
- Eight screw styles available in a wide range of lengths with convenient access during surgery

- 1 4.5mm Locking Solid (20-110mm)
- 2 4.5mm Blunt Tip Locking (8-20mm)
- 3 4.5mm Non-Locking Solid (20-95mm)
- 4 5.5mm Cancellous (50-95mm)
- 5 5.5mm Partially Threaded Cancellous (50-95mm)*
- 6 4.5mm Locking Cannulated (35-110mm)
- 7 5.5mm Cannulated Cancellous (40-95mm)
- 8 5.5mm Partially Threaded Cannulated Cancellous (40-95mm)*



*Additionally available

YOUR COMPLETE DISTAL FEMUR SOLUTION



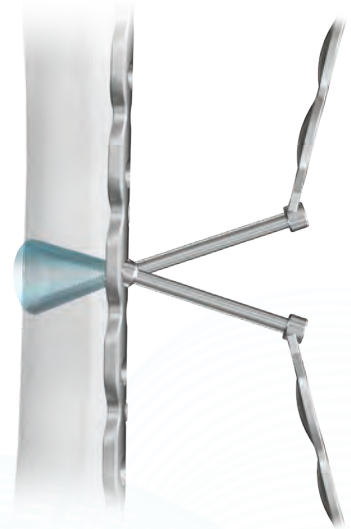
Multiple Fixation Options

To target around existing implants



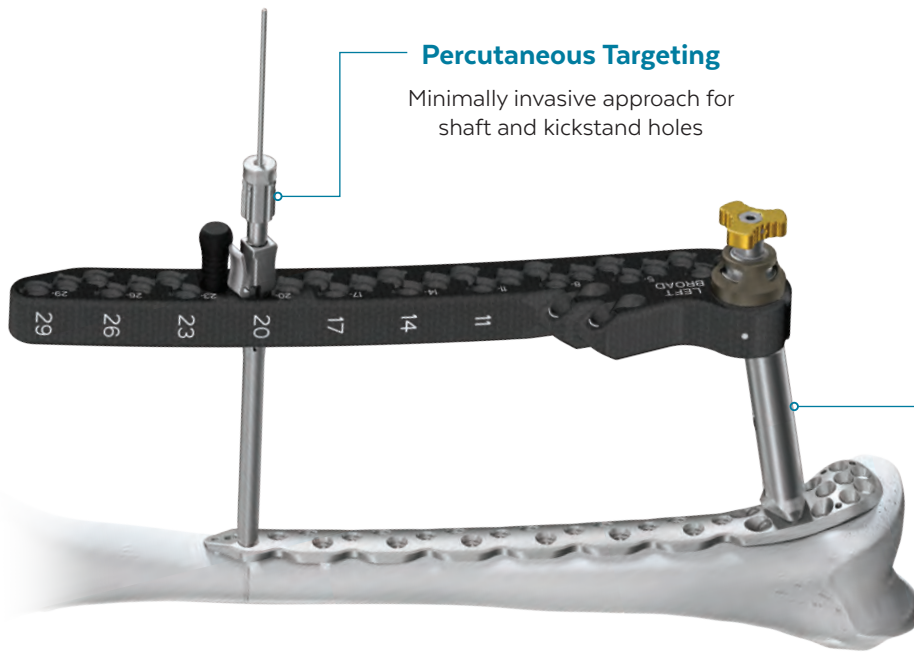
Dual Kickstand Screws

Multiple points of support for the medial condyle from laterally based plates



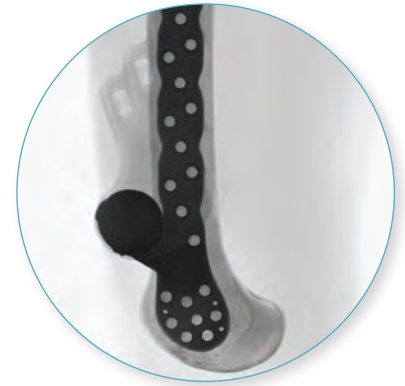
Polyaxial Design

$\pm 15^\circ$ (30° cone) of angulation in every locking hole



Percutaneous Targeting

Minimally invasive approach for shaft and kickstand holes



Unobstructed Lateral Imaging

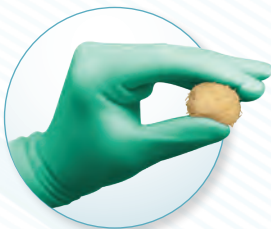
For fracture site visibility with off-axis aiming arm attachment

Bring *Life* to Your **Construct**
with *Globus Biologics*

The full line of orthobiologic solutions includes cellular allografts, demineralized bone matrixes (DBMs), demineralized cancellous sponges, and bioactive synthetic bone void fillers. The Globus biomaterials portfolio offers a solution for various trauma fracture needs.

Trifecta®

Viable Stem Cell Allograft



Demineralized cortical fibers and cancellous chips with viable cells

XEMPLIFI®

DBM



Demineralized bone and temperature-sensitive carrier, with or without cancellous chips

KINEX® & KINEX® PLUS

Bioactive Bone Void Filler



Bioglass, hyaluronic acid, and collagen

SIGNIFY®

Bioactive Bone Void Filler



Bioglass, glycerol, and PEG



Globus Medical
Valley Forge Business Center
2560 General Armistead Avenue
Audubon, PA 19403
www.globusmedical.com

Customer Service:
Phone 1-866-GLOBUS1 (or 1-866-456-2871)
Fax 1-866-GLOBUS3 (or 1-866-456-2873)