



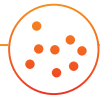
Tests offered on peripheral blood

June 23, 2021



Cytogenetics

Chromosome Analysis
SNP/Cytogenetic Profile



FISH

ALK for Lymphoma
ALL Adult FISH Panel
ALL FISH Panel (Ph-Like)
ALL Pediatric FISH Panel
AML Favorable-Risk Panel
AML Non-Favorable Risk FISH Panel
AML Standard FISH Panel
BCR/ABL1 t(9;22)
BIRC3(API2)/MALT1 t(11;18)
CLL FISH Panel
Eosinophilia FISH Panel
High-Grade B-Cell Lymphoma Reflex FISH Panel
High-Grade/Large B-Cell Lymphoma Panel
Low-Grade/Small B-Cell Lymphoma FISH Panel
MDS Extended FISH Panel
MDS Standard FISH Panel
MPN FISH Panel
MYC/IgH/Cen 8 t(8;14)

FISH (continued)

Non-Hodgkin's Lymphoma (NHL) FISH Panel
PDGFRA Rearrangement
Plasma Cell Myeloma FISH Panel
Plasma Cell Myeloma Prognostic FISH Panel
PML/RARA t(15;17)



Flow Cytometry

AML Add-On Flow Panel
AML Follow-Up Flow Panel
B-ALL Add-On Flow Panel
B-ALL Follow-Up Flow Panel
B-ALL MRD Flow Panel
B-Cell Lymphoma Follow-Up Flow Panel
CD52 Analysis
CLL MRD Flow Panel
CLL/Mantle Cell Companion Add-On Flow Panel
Erythroid-Mega Add-On Flow Panel
Extended Leukemia/Lymphoma Panel – 31 markers
Hairy Cell Leukemia (HCL) Add-On Flow Panel
Hairy Cell Leukemia (HCL) Follow-Up Flow Panel
High Sensitivity PNH Evaluation
Mast Cell Add-On Flow Panel

Flow Cytometry (continued)

Plasma Cell Add-On Flow Panel
Plasma Cell Follow-Up Flow Panel
Sezary T-Cell Add-On Flow Panel
Standard Leukemia/Lymphoma Panel – 24 markers
T&B Tissue Flow Panel
T-ALL Add-On Flow Panel
T-ALL Follow-Up Flow Panel
T-Cell Lymphoma Companion Panel
T-Cell Lymphoma Follow-Up Flow Panel
T-Cell Receptor/LGL Add-On Flow Panel
V-Beta T-Cell Clonality

Liquid Biopsy (continued)

NeoLAB® IDH1 Mutation Analysis
NeoLAB® IDH2 Mutation Analysis
NeoLAB® inv(16), CBFβ-MYH11 Translocation
NeoLAB® KIT (c-KIT) Mutation Analysis
NeoLAB® MDS/CMML Profile
NeoLAB® Myeloid Disorders Profile
NeoLAB® NPM1 Mutation Analysis
NeoLAB® RUNX1-RUNX1T1 (AML1-ETO Translocation, t(8;21))
NeoLAB® Solid Tumor Liquid Biopsy



Hereditary Cancer (Germline)

Bone Marrow Failure NGS Panel
BRCA1 Single Gene
BRCA1/2 Focus Panel
BRCA2 Single Gene
Colorectal Cancer Focus Panel
Full Comprehensive Cancer Panel
Full Focus Cancer Panel



Molecular

ABL1 Kinase Domain Mutation Analysis
ALL Fusion Profile
ASXL1 Mutation Analysis
B-Cell Gene Rearrangement
BCL1 Translocation, t(11;14)
BCL2 Translocation, t(14;18)
BCR-ABL1 Non-Standard p230
BCR-ABL1 Standard p210, p190
BTK Inhibitor Acquired Resistance Panel
BTK Inhibitor Primary Susceptibility Panel
BTK Mutation Analysis
CALR Mutation Analysis
CEBPA Mutation Analysis
CSF3R Mutation Analysis
CXCR4 Mutation Analysis
DNMT3A Mutation Analysis
ETV6-RUNX1 (TEL-AML1) Translocation, t(12;21)



Liquid Biopsy

InVisionFirst®–Lung Liquid Biopsy
NeoLAB® AML Profile
NeoLAB® BTK Inhibitor Acquired Resistance Panel
NeoLAB® FLT3 Mutation Analysis

Molecular (continued)

FLT3 Mutation Analysis
IDH1 & IDH2 Mutation Analysis
IgH Clonality by NGS
IgVH Hypermutation Analysis
inv(16), CFBF-MYH11 Translocation
JAK2 Exon 12-13 Mutation Analysis
JAK2 V617 Mutation Analysis – Qualitative
JAK2 V617 Mutation Analysis – Quantitative
KIT (c-KIT) Mutation Analysis
MAP2K1 Mutation Analysis
MLL-PTD Mutation Analysis
MPL Mutation Analysis
MPN Extended Reflex Panel
MYD88 Mutation Analysis
NeoTYPE® AITL/Peripheral T-Cell Lymphoma Profile
NeoTYPE® AML Prognostic Profile
NeoTYPE® CLL Prognostic Profile
NeoTYPE® JMML Profile
NeoTYPE® Lymphoma Profile
NeoTYPE® MDS/CMML Profile
NeoTYPE® Myeloid Disorders Profile
NOTCH1 Mutation Analysis
NPM1 MRD Analysis
NPM1 Mutation Analysis
PLC-Gamma-2 Mutation Analysis
PML-RARA Translocation, t(15;17)
Rapid AML Therapeutic Panel
RUNX1-RUNX1T1 (AML1-ETO) Translocation, t(8;21)
SF3B1 Mutation Analysis

Molecular (continued)

SNP/Cytogenetic Profile
SRSF2 Mutation Analysis
STAT3 Mutation Analysis
T-Cell Receptor Beta Gene Rearrangement
T-Cell Receptor Gamma Gene Rearrangement
TET2 Mutation Analysis
TP53 Mutation Analysis
UGT1A1 Genotyping



Specialty Testing

COMPASS® Hematopathology Services



12701 Commonwealth Dr., Suite 9
Fort Myers, FL 33913
Phone: 866.776.5907 | Fax: 239.690.4237
www.neogenomics.com