

Registration

Online registration can be accessed at cme.ahn.org:

Click on **Courses**, then type or scroll down to find **AHN Inaugural Liver Disease Summit** and click on **Register**.

Fees

Physicians: \$50

All others: Free

Questions?

Please contact bernice.sulkowski@ahn.org in the CME office for more information.



Scan code for more information.

Allegheny General Hospital
Continuing Medical Education
320 East North Avenue
Suite 214, South Tower
Pittsburgh, PA 15212

CME/MOC opportunity

AHN Inaugural Liver Disease Summit

Saturday, April 6, 2024

The Westin Hotel
1000 Penn Avenue
Pittsburgh, PA 15222



02/24 Z MX3343902



Sponsored by
The Division of Gastroenterology, Hepatology and Nutrition
Allegheny Health Network
Pittsburgh, Pennsylvania

Conference overview and intended audience

This one-day conference provides medical and surgical updates in diagnosis, management and endoscopic innovations to treat a range of liver diseases. The course is intended for gastroenterologists, general hepatologists, transplant hepatologists, internists, transplant surgeons, nurse practitioners, physician assistants, radiologists, pathologists, and GI fellows/internal medicine residents, as well as surgical residents/medical students, transplant coordinators, and nurses.

Conference objectives

- Create awareness of liver transplant and initiation of referral to a transplant center.
- Increase knowledge for residents, physicians and physician providers on updates in management of various liver diseases.
- Increase knowledge regarding medical, endoscopic and surgical advances in hepatology and liver transplant.

CME accreditation

Allegheny General Hospital is accredited by the Accreditation Council for Continuing Medical Education to sponsor continuing medical education for physicians.

Allegheny General Hospital designates this live activity for a maximum of 5.75 *AMA PRA Category 1 Credits*[™].

Physicians should claim only the credit commensurate with the extent of their participation in this activity.

ABIM MOC Credits Accredited providers are required to submit learner completion data for each activity registered as meeting ABIM guidelines via the PARS system. Credit will be reported on your behalf.

American Nurses Credentialing Center (ANCC) accepts *AMA PRA Category 1 Credits*[™] from organizations accredited by the ACCME.

American Academy of Nurse Practitioners (AANP) accepts *AMA PRA Category 1 Credits*[™] from organizations accredited by the ACCME.

The National Commission on Certification of Physician Assistants (NCCPA) states that the *AMA PRA Category 1 Credits*[™] are acceptable for continuing medical education requirements for recertification.

Allegheny General Hospital has approved this activity for 5.75 contact hours for non-physicians.

Conference agenda

7 – 7:50 a.m. Registration, breakfast, and visit exhibits

7:50 – 8 a.m. Welcome address by division chief

Session 1

Moderator: Jose Oliva, MD

8:05 – 8:25 a.m. Updates in portal hypertension
Atoosa Rabiee, MD

8:30 – 8:50 a.m. Alcohol related liver diseases — optimizing management
Nabeeha Mohy-ud-din, MD

8:55 – 9:15 a.m. Endoscopic advances in hepatology
David Diehl, MD

9:20 – 9:40 a.m. Hepatic encephalopathy
Jasmohan Singh Bajaj, MD

9:40 – 9:55 a.m. Q&A

9:55 – 10:15 a.m. Break and visit exhibits

Session 2

Moderator: Nabeeha Mohy-ud-din, MD

10:20 – 10:40 a.m. Disorders of liver vasculature
Douglas A. Simonetto, MD

10:45 – 11:05 a.m. Expanding indications for liver transplant
Lorenzo Machado, MD

11:10 – 11:30 a.m. MASLD — what's new?
Tavankit Singh, MD

11:35 – 11:55 a.m. Surgical considerations of liver transplant: what does the hepatologist need to know?
Jennifer Carpenter, MD

Noon – 12:20 p.m. Hepatorenal syndrome
Michael Babich, MD

12:20 – 12:35 p.m. Q&A

12:35 – 1:35 p.m. Lunch and visit exhibits

Session 3

Moderator: Hui-wei Chen, MD

1:35 – 1:50 p.m. Stronger together — perspectives from a patient advocate
Suzanna Masartis

Case based discussions (presented by fellows)

1:50 – 2:10 p.m. Chronic liver disease

2:10 – 2:30 p.m. Cirrhosis and its complications

2:30 – 2:50 p.m. Peri and post liver transplant management

2:50 – 3 p.m. Vote of thanks and certificate presentation

Course directors



Nabeeha Mohy-ud-din, MD
Transplant Hepatologist
Allegheny Health Network



Jose Oliva, MD
Medical Director, Liver Transplantation
Allegheny Health Network

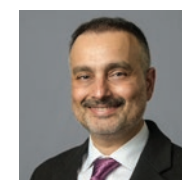
Faculty



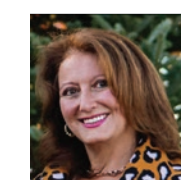
Michael Babich, MD
GI Fellowship Program Director
Associate Professor of Medicine,
Drexel University College of Medicine
Allegheny Health Network



Lorenzo Machado, MD
Abdominal Transplant and Hepatobiliary Surgery
Allegheny Health Network



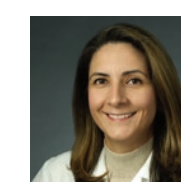
Jasmohan Singh Bajaj, MD, MS, FACP, AGAF, FAASLD, FRCP (London)
Professor, Division of Gastroenterology, Hepatology and Nutrition,
Virginia Commonwealth University and
Richmond VA Medical Center



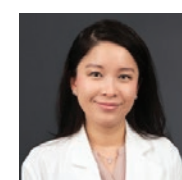
Suzanna Masaritis
CEO, Community Liver Alliance



Jennifer Carpenter, MD
Surgical Director, Living Donor Kidney Program
Assistant Professor, Drexel University
College of Medicine
Allegheny Health Network



Atoosa Rabiee, MD
Chief of Transplant Services
Director of Hepatology
Assistant Professor of Medicine
VA Medical Center



Hui-wei Chen, MD
Transplant Hepatologist,
AHN Allegheny General Hospital
Allegheny Health Network



Douglas A. Simonetto, MD
Associate Professor of Medicine,
Mayo Clinic College of Medicine
Director, Gastroenterology and Hepatology
Fellowship Program
Division of Gastroenterology and Hepatology,
Mayo Clinic



David Diehl, MD
Clinical Professor of Medicine and Pathology,
Geisinger Commonwealth School of Medicine
Department of Gastroenterology,
Geisinger Medical Center



Tavankit Singh, MD
Transplant Hepatologist
Allegheny Health Network

Disclosure of significant relationships with relevant commercial companies. In accordance with the Accreditation Council for Continuing Medical Education (ACCME) and the policy of Allegheny General Hospital, presenters must disclose all relevant financial relationships, which in the context of their presentation(s), could be perceived as a real or apparent conflict of interest, (e.g., ownership of stock, honorarium, or consulting fees). Any identifiable conflicts will be resolved prior to the activity. Any such relationships will be disclosed to the learner prior to the presentation(s).