

CME/AAFP/MOC opportunity


2nd Annual Pulmonology for Primary Care Providers Symposium

Friday, November 10, 2023

The Westin Pittsburgh
1000 Penn Avenue
Pittsburgh, PA 15222



Sponsored by
Divisions of Allegheny Pulmonary and Critical Care
and Forbes Family Medicine Residency Program
Allegheny Health Network
Pittsburgh, Pennsylvania

Nucala 
(mepolizumab)
Injection 100 mg/mL



**BATTLE
TESTED**

See why at [NucalaBattleTested.com](https://www.NucalaBattleTested.com)

Trademarks are owned by or licensed to
the GSK group of companies.



©2023 GSK or licensor.
MPLADVT230013 March 2023
Produced in USA.



TRELEGY ELLIPTA
(fluticasone furoate, umeclidinium,
and vilanterol inhalation powder)
100/62.5/25 mcg • 200/62.5/25 mcg

Thank you to our WIFI and Lanyard sponsors

Sanofi

Regeneron

Thank you to the following Platinum sponsor

GlaxoSmithKline

Thank you for the following Gold sponsors

Sanofi

Regeneron

We gratefully acknowledge the following companies for providing support through an educational grant:

Adagio

AHN DME

Astra Zeneca

Biodesix

Boehringer Ingelheim

Breathe PA

Electromed

Healthcare@Home

Highmark

Inspire Medical Systems Inc.

Jazz Pharmaceuticals

Lifeline Physical Therapy

Pfizer

United Therapeutics

Veracyte

Conference overview and intended audience

The Pulmonology for the Primary Care Providers Symposium provides learners with current and relevant updates on the management of patients with pulmonary disorders. Highlights include updates in the interpretation of pulmonary function testing, COPD, asthma, insomnia, obstructive sleep apnea, pulmonary nodules, and lung cancer. The approach to chronic pulmonary disease including dyspnea, pulmonary rehabilitation, and smoking cessation will also be discussed; participants will become familiar with the various options and resources available to their pulmonary patients. The course will also feature case-based discussion with a panel of physicians navigating through cases encountered in everyday practice. This course is applicable to family medicine physicians, internal medicine physicians, pulmonary physicians, advanced practice providers, nurses, respiratory therapists, and other professionals with an interest in learning more about pulmonary medicine.

CME accreditation

Physicians

Allegheny General Hospital is accredited by the Accreditation Council for Continuing Medical Education (ACCME).

Allegheny General designates this live activity for a maximum of 6.0 *AMA PRA Category 1 Credits*[™].

Physicians should only claim the credit commensurate with the extent of their participation in this activity.

American Academy of Nurse Practitioners (AANP) accepts *AMA PRA Category 1 Credits*[™] from organizations accredited by the ACCME.

The National Commission on Certification of Physician Assistants (NCCPA) states that the *AMA PRA Category 1 Credits*[™] are acceptable for continuing medical education requirements for recertification.

AHN Allegheny General has approved this activity for 6.0 contact hours for non-physicians

Application has been submitted to the AARC for Respiratory Credits. Credits to be determined.

Program agenda

7 – 7:55 a.m.	Registration, breakfast, and visit exhibits
8 – 8:10 a.m.	Welcome and overview Bill Barker, MD, MMM, FCCP; Christine Mackey, MD
8:15 – 8:35 a.m.	Difficult-to-treat asthma Bill Barker, MD, MMM, FCCP
8:40 – 9 a.m.	COPD Gold Guidelines and Care Path Program Meilin Young, MD, FCCP
9 – 9:20 a.m.	Update endobronchial valve procedure and advanced bronchoscopy Stephanie Baltaji, MD
9:25 – 10 a.m.	Insomnia, diagnosis and treatment, ordering sleep testing – ins and outs Christopher K. Pham, DO, FAAFP; Lindsay Dancho, RPSGT
10 – 10:20 a.m.	Break, visit exhibits, and professional interaction
10:20 – 10:40 a.m.	Allergies and pulmonary disease – early testing and referral Christine Rauscher, MD
10:40 – 11 a.m.	Evaluating lung nodules Sohini Ghosh, MD
11:05 – 11:30 a.m.	Pulmonary rehabilitation options – still the best referral Raj Adurty, MD, FCCP, FACP; Kevin Nauer, BS, RN
11:30 – 11:55 a.m.	Suspecting pulmonary disease (ILD) – what to order and when to refer Briana DiSilvio, MD
Noon – 1 p.m.	Lunch and visit exhibits
1 – 1:40 p.m.	PCP/pulmonary panel discussion of patient cases Marvin Balaan, MD; Scott Vargo, MD; Ahmad Alhajhusain, MD; Sonia Dhawan, MD
1:40 – 2 p.m.	Break/coffee cart, visit exhibits, and professional interaction
2:05 – 3 p.m.	Simulations (Room #1) PFT-review and Q&A AHN Pulmonary Team (Room #2) Demonstrations/respiratory equipment AHN/AHN DME
3 – 3:25 p.m.	Symposium jeopardy Q&A Joseph Gordon, BA, RRT; Christine Mackey, MD
3:30 p.m.	Symposium wrap-up Christine Mackey, MD; Bill Barker, MD, FCCP

Course directors



Bill Barker, MD, MMM, FCCP

Chief Quality Officer,
Ambulatory Medicine
Medicine Institute
System Lead for Asthma
Allegheny Health Network



Christine Mackey, MD

Department of Internal Medicine
Allegheny General Hospital

Planning committee



Joseph Gordon, BA, RRT

COPD Coordinator,
AHN Allegheny General
AHN West Penn Hospital
Allegheny Health Network



Kevin Nauer, BS, RN

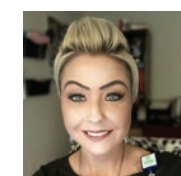
Manager, Pulmonary Rehabilitation
Lung Transplant Coordinator
and COPD Nurse Navigator
Allegheny Health Network

Faculty



Raj Adurty, MD, FCCP, FACP

MICU Director, Pulmonary and Critical Care
Medicine, AHN Canonsburg Hospital
System Director, Pulmonary Rehab, AHN
Assistant Professor of Medicine,
Temple University School of Medicine,
Division of Pulmonary and Critical Care Medicine
AHN Allegheny General



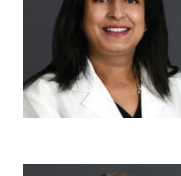
Lindsay Dancho, RPSGT

Supervisor Sleep Lab Technology
Jefferson Regional Medical Center
Allegheny Health Network



Ahmad Alhajhusain, MD

Associate Clinical Professor,
Drexel University College of Medicine
Associate AHN System Director, PFT lab
Allegheny Health Network



Sonia Dhawan, MD

Primary Care
Allegheny Health Network



Stephanie Baltaji, MD

Division of Pulmonary and Critical Care Medicine
Allegheny Health Network



Briana DiSilvio, MD

Associate Program Director,
Pulmonary and Critical Care Fellowship
Co-Director, Autoimmune Lung Disease Clinic
Director, Fellowship Research
Associate Director, AHN Allegheny General
Pulmonary Lab
Allegheny Health Network



Marvin Balaan, MD

Professor of Clinical Medicine,
Drexel University College of Medicine
Division of Pulmonary and Critical Care
Allegheny Health Network



Sohini Ghosh, MD

Director of Interventional Pulmonology
Allegheny Health Network

Faculty, continued



Christopher K. Pham, DO, FAAFP
Sleep Medicine
Allegheny Health Network



Scott Vargo, MD
Primary Care
Allegheny Health Network



Christine Rauscher, MD
Assistant Professor of Medicine,
Drexel University College of Medicine
Medicine Institute,
Section of Allergy and Immunology,
Division of Pulmonary, Critical Care,
Sleep and Allergy



Meilin Young, MD, FCCP
Neurocritical Care Medicine
Co-Director, Neurological ICU
PCCM Subspecialty Education Coordinator,
Medicine Institute
Assistant Professor, Department of Medicine,
Drexel University College of Medicine
Division of Pulmonary and Critical Care Medicine
Allegheny Health Network

Disclosure of significant relationships with relevant commercial companies. In accordance with the Accreditation Council for Continuing Medical Education (ACCME) and the policy of AHN Allegheny General, presenters must disclose all relevant financial relationships, which in the context of their presentation(s), could be perceived as a real or apparent conflict of interest (e.g., ownership of stock, honoraria, or consulting fees). Any identifiable conflicts will be resolved prior to the activity. Any such relationships will be disclosed to the learner prior to the presentation(s)..

The following faculty members have nothing to disclose:

Raj Adurty, MD, FCCP, FACP; Ahmad AlhajHusain, MD; Bill Barker, MD, MMM, FCCP; Stephanie Baltaji, MD; Joseph Gordon, BA, RRT; Kevin Nauer, BS, RN; Christine Mackey, MD; Christopher Pham, DO, FAAFP; Scott Vargo, MD

The following faculty members disclose:

Briana DiSilvio, MD

Speaker's Bureau: Boehringer Ingelheim (OFEV), AstraZeneca (Breztri)

Sohini Ghosh, MD

Consultant: Intuitive Surgical
Speaker's Bureau: AstraZeneca

Christine Rauscher, MD

Speaker's Bureau: AstraZeneca
Board Membership: Sanofi/Regeneron

Meilin Young, MD, FCCP

Speaker's Bureau: GSK, Boehringer Ingelheim, and Regeneron

Any relevant conflicts have been mitigated.

Evaluations and credits

An email will be sent out a 2–4 days after the conference with information on how to complete evaluation for credit. Thank you for attending!

PollEV.com/AHN



Scan here
to participate
in our poll.

