

Registration

Online registration can be accessed at [cme.ahn.org](https://cme.ahn.org):

Click on **Courses**, then scroll down to or type **4th Annual AHN IBD Summit** and click on **Register**.

Fees

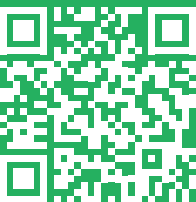
Physicians: **\$50**

Physician assistants, certified registered nurse practitioners, nurses, fellows, students, and other health care professionals: **Free**

Lodging

Fairmont Pittsburgh  
510 Market Street  
Pittsburgh, PA 15222

A reduced rate of \$229 at the Fairmont Pittsburgh is available until Oct. 25 or until the block is full — whichever comes first. Call 412-773-8800 to make a reservation. Parking will be validated.



Scan code to book online.

Questions?

Please contact **Ashley Knoch** in the CME office at [ashley.knoch@ahn.org](mailto:ashley.knoch@ahn.org) for more information.



Scan code for more information.

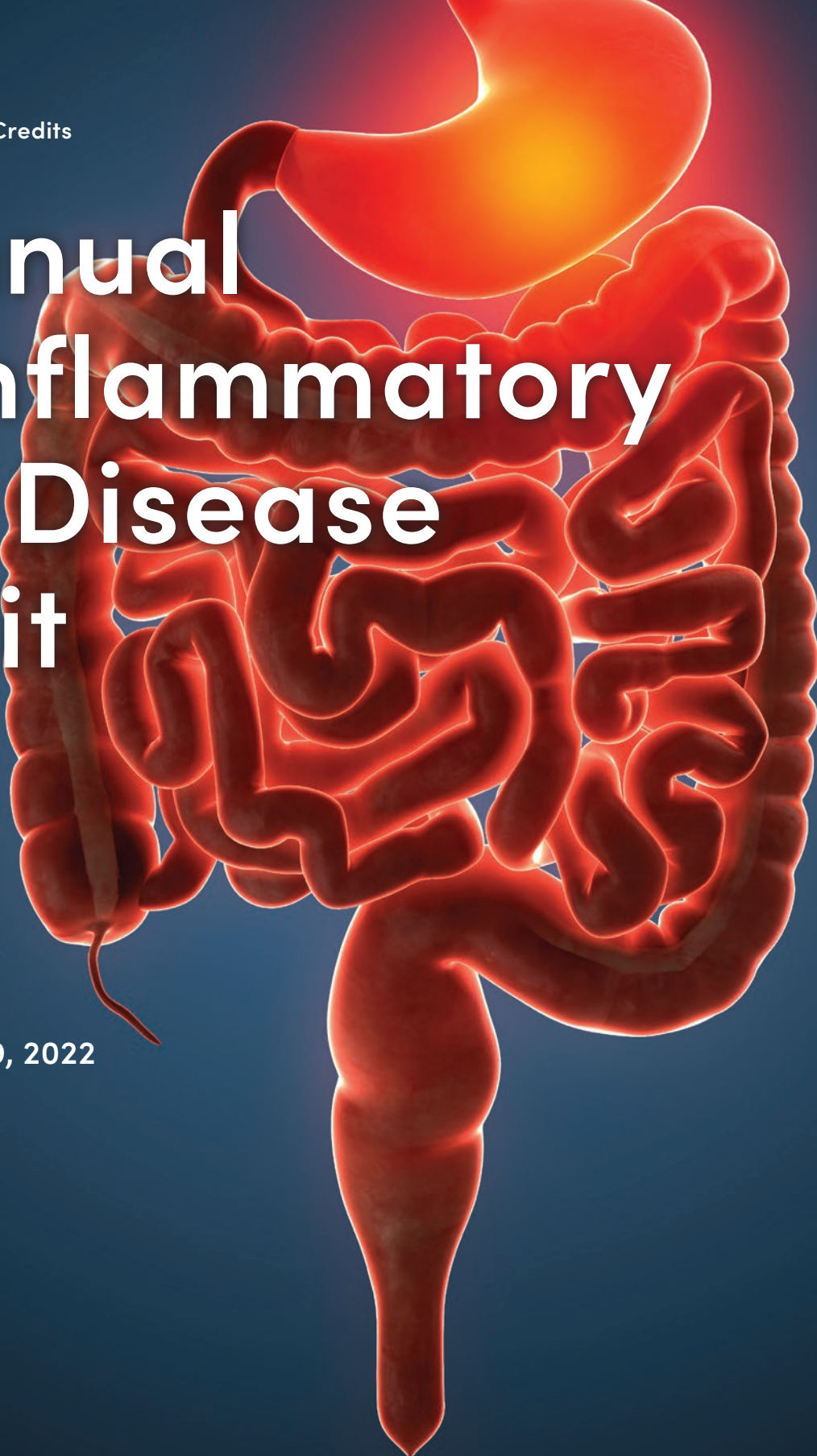
AHN Allegheny General  
Continuing Medical Education  
320 East North Avenue  
Suite 214, South Tower  
Pittsburgh, PA 15212



CME opportunity

Earn up to 6.0 CME and MOC Credits

# 4th Annual AHN Inflammatory Bowel Disease Summit



Saturday, November 19, 2022  
Fairmont Pittsburgh  
510 Market Street  
Pittsburgh, PA 15222



Provided by:  
The Division of Gastroenterology,  
Hepatology and Nutrition  
Allegheny Health Network  
Pittsburgh, Pennsylvania



## Conference overview

The Division of Gastroenterology, Hepatology and Nutrition at Allegheny Health Network (AHN) will explore advances in the treatment and management of inflammatory bowel disease (IBD) at the 4th Annual AHN IBD Summit. This program will feature world-renowned IBD faculty discussing clinical IBD topics pertaining to diagnosis, management, and complications. The event is ideal for gastroenterologists, internists, colorectal surgeons, nurse practitioners, physician assistants, radiologists, pathologists, and GI fellows/internal medicine, as well as surgical residents/medical students, nutritionists, and nurses.

## CME accreditation

### Physicians

Allegheny General Hospital is accredited by the Accreditation Council for Continuing Medical Education (ACCME) to provide continuing medical education for physicians. Approved for *AMA PRA Category 1 Credit™*.

ABIM MOC Credits accredited providers are required to submit learner completion data for each activity registered as meeting ABIM guidelines via the PARS system. Credit will be reported on your behalf.

**American Nurses Credentialing Center (ANCC)** accepts *AMA PRA Category 1 Credits™* from organizations accredited by the ACCME.

**American Academy of Nurse Practitioners (AANP)** accepts *AMA PRA Category 1 Credits™* from organizations accredited by the ACCME.

**The National Commission on Certification of Physician Assistants (NCCPA)** states that the *AMA PRA Category 1 Credits™* are acceptable for continuing medical education requirements for recertification.

Allegheny General Hospital has approved this activity for contact hours for non-physicians.

**Disclosure of significant relationships with relevant commercial companies.** In accordance with the Accreditation Council for Continuing Medical Education (ACCME) and the policy of AHN Allegheny General, presenters must disclose all relevant financial relationships, which in the context of their presentation(s), could be perceived as a real or apparent conflict of interest (e.g., ownership of stock, honoraria, or consulting fees). Any identifiable conflicts will be resolved prior to the activity. Any such relationships will be disclosed to the learner prior to the presentation(s).

## Program agenda

### Opening

**7 – 7:50 a.m.** Registration, breakfast, and exhibits  
**7:50 – 8 a.m.** Welcome address  
**Division Chief**

### Session 1 — Advances in medical management of IBD

Moderators: **Sandra El-Hachem, MD, and Preethi Chintamaneni, MD**

**8:05 – 8:25 a.m.** Management of severe ulcerative colitis — beyond steroids  
**Bincy P. Abraham, MD, MS, AGAF, FACG, FASGE**

**8:30 – 8:50 a.m.** Positioning of advanced therapies in IBD  
**Miguel D. Regueiro, MD**

**8:55 – 9:15 a.m.** Is it time to combine small molecules and anti-TNF for management of IBD?  
**Anita Afzali, MD, MPH, MHCM, FACG, AGAF**

**9:20 – 9:40 a.m.** Management of extra intestinal manifestations of IBD  
**Parambir S. Dulai, MD**

**9:40 – 9:55 a.m.** Q&A

**9:55 – 10:15 a.m.** Break and visit exhibits

### Session 2 — Management of IBD — a step up

Moderators: **Heitham Abdul-Baki, MD, James McCormick, DO, and Marissa Isaacson, MD**

**10:20 – 10:40 a.m.** Advances in medical management of fistulizing IBD  
**Edward L. Barnes, MD, MPH**

**10:40 – 11 a.m.** Advances in surgical management of fistulizing IBD  
**Scott A. Strong, MD**

**11:05 – 11:25 a.m.** Management of IBD in setting of solid organ cancer and end organ dysfunction  
**Raymond K. Cross, MD, MS, AGAF, FACG**

**11:30 – 11:50 a.m.** Can we stop therapy in IBD patients? Are we there yet?  
**Aline Charabaty, MD, AGAF, FACG**

**11:50 a.m. – noon** Q&A

**Noon – 12:50 p.m.** Lunch and visit exhibits

### Session 3 — IBD potpourri

Moderators: **Sandra El-Hachem, MD, and Preethi Chintamaneni, MD**

**12:55 – 1:45 p.m.** Case based discussions for management of complex IBD cases  
**Sandra El-Hachem, MD**

**1:50 – 2:10 p.m.** Management of chronic ileal pouchitis, the current state of the art  
**Bo Shen, MD**

**2:15 – 2:30 p.m.** Break and visit exhibits

### Session 4 — Endoscopy and surgery in IBD

Moderators: **Heitham Abdul-Baki, MD, James McCormick, DO, and Marissa Isaacson, MD**

**2:35 – 2:55 p.m.** Should I do chromoendoscopy? I am confused!  
**Francis A. Farraye, MD, MSc, AGAF, FASGE, MACG**

**3 – 3:20 p.m.** Management of colitis associated dysplasia In IBD  
**Gursimran Singh Kochhar, MD, FACP, CNSC**

**3:25 – 3:45 p.m.** Surgery is never the last resort in IBD management — lessons learned so far  
**Phillip R. Fleshner, MD**

**3:45 – 4 p.m.** Q&A

**4 – 5 p.m.** Reception and visit exhibits

**Exhibits are open from 7 a.m. – 5 p.m.**

## Course directors



### Gursimran Singh Kochhar, MD, FACP, CNSC

Director, Interventional Endoscopy  
Associate Division Chief  
Assistant Professor of Medicine,  
Drexel University College of Medicine  
Division of Gastroenterology,  
Hepatology and Nutrition  
Allegheny Health Network



### Sandra El-Hachem, MD

Medical Director,  
Center for Inflammatory Bowel Diseases  
Assistant Professor of Medicine,  
Drexel University College of Medicine  
Division of Gastroenterology,  
Hepatology and Nutrition  
Allegheny Health Network

## Faculty



### Bincy P. Abraham, MD, MS, AGAF, FACG, FASGE

Professor, Clinical Medicine,  
Houston Methodist Academic,  
Institute and Weill Cornell Medical College  
Distinguished Professor and Director,  
Underwood Center,  
Fondren Inflammatory Bowel Disease Program  
Director, Gastroenterology Fellowship Program,  
Houston Methodist



### Anita Afzali MD, MPH, MHCM, FACG, AGAF

Professor of Clinical Medicine,  
Division of Digestive Diseases  
Executive Vice Chair of Medicine,  
Department of Internal Medicine,  
University of Cincinnati College of Medicine  
Associate Chief Medical Officer,  
UC Health System and Cincinnati Children's Hospital  
Adjunct Professor of Medicine, Ohio State University



### Edward L. Barnes, MD, MPH

Assistant Professor of Medicine  
Associate Program Director,  
Gastroenterology and Hepatology Fellowship  
Division of Gastroenterology and Hepatology,  
University of North Carolina at Chapel Hill



### Aline Charabaty, MD, AGAF, FACG

Assistant Clinical Director,  
Division of Gastroenterology,  
Johns Hopkins School of Medicine  
Clinical Director, IBD Program  
Johns Hopkins Sibley Memorial Hospital



### Raymond K. Cross, MD, MS, AGAF, FACG

Professor of Medicine,  
Director, IBD Program,  
University of Maryland School of Medicine



### Parambir S. Dulai, MD

Associate Professor of Medicine  
Director of GI Clinical Trials  
Director of Precision Medicine  
Division of Gastroenterology and Hepatology  
Feinberg School of Medicine Northwestern University



### Francis A. Farraye, MD, MSc, AGAF, FASGE, MACG

Professor of Medicine,  
Director, Inflammatory Bowel Disease Center,  
Division of Gastroenterology and Hepatology,  
Mayo Clinic



### Phillip R. Fleshner, MD

Shierley, Jesslyne, and Emmeline Widjaja Chair,  
Colorectal Surgery  
Director, Colorectal Surgery Residency,  
Cedars-Sinai Medical Center  
Clinical Professor of Surgery



### Miguel D. Regueiro, MD

Chair, Digestive Disease and Surgery Institute  
Chair, Department of Gastroenterology,  
Hepatology and Nutrition  
The Pier C. and Renee A. Borra Family Endowed Chair,  
Gastroenterology and Hepatology  
Professor, Department of Medicine,  
Cleveland Clinic Lerner College of Medicine,  
Case Western Reserve University



### Bo Shen, MD

Director, IBD Center  
Vice Chair, Innovation in Medicine and Surgery  
Professor of Medicine,  
Columbia University Irving Medical Center



### Scott A. Strong, MD

Vice Chair, Clinical Affairs, Department of Surgery  
Chief, Gastrointestinal Surgery,  
Department of Surgery,  
Feinberg School of Medicine,  
Northwestern University