

CME accreditation

Physicians: This activity has been planned and implemented in accordance with the Essential Areas and Policies of the Accreditation Council for Continuing Medical Education (ACCME) through joint Providership of Allegheny General Hospital and AHN Cancer Institute West Penn Hospital. Allegheny General Hospital is accredited by the ACCME to provide continuing medical education for physicians.

Allegheny General Hospital designates this live activity for a maximum of 5.75 *AMA PRA Category 1 Credits*[™]. Physicians should claim only the credit commensurate with the extent of their participation in the activity.

The National Commission on Certification of Physician Assistants (NCCPA) states that the *AMA PRA Category 1 Credits*[™] are acceptable for continuing medical education requirements for recertification.

American Academy of Nurse Practitioners (AANP) accepts *AMA PRA Category 1 Credits*[™] from organizations accredited by the ACCME.

American Nurses Credentialing Center (ANCC) accepts *AMA PRA Category 1 Credits*[™] from organizations accredited by the ACCME.

Non-Physicians: Allegheny General Hospital certifies participation in this educational activity.

Registration

Register at cme.ahn.org.

| | |
|-----------------------|---------------|
| Physicians | \$125 |
| AHN physicians | \$80 |
| Nurses and others | \$65 |
| AHN nurses and others | \$45 |
| Virtual attendees | \$45 |
| Residents and fellows | Complimentary |

AHN and Highmark employees

Log in using your AHN or Highmark email and network password. Once logged in, make sure you complete your profile to earn and track your credit.

Visitors

To create a new visitor account:

1. Click **Visitor Login** at the top right corner of the homepage, then complete the required fields.
2. Once you are logged in, click **Courses**, type in **Highlights of ASH 2021**, then click **Register**.

Allegheny General Hospital
Continuing Medical Education
320 East North Avenue
Suite 214, South Tower
Pittsburgh, PA 15212



12/21 Z MX1170500

CME opportunity

Highlights of ASH 2021

Friday, February 25, 2022
Attend Live or Virtually
Fairmont Hotel
510 Market Street
Pittsburgh, PA

Jointly provided by
Allegheny General Hospital and
Allegheny Health Network Cancer Institute
Division of Hematology and Cellular Therapy
West Penn Hospital
Pittsburgh, PA

This meeting is not sponsored, sanctioned by,
or part of the Annual Meeting of the American
Society of Hematology.



Course overview

The field of hematology has been rapidly evolving. This continuing medical education activity will cover new developments in the diagnosis and treatment of malignant and nonmalignant hematological disorders, as presented at the 2021 Annual Meeting of the American Society of Hematology (ASH). In this one-day course, faculty will share the latest updates in myeloid malignancies, lymphoma, leukemia, multiple myeloma, coagulation disorders, and stem cell transplantation. Through presentations and Q&A, attendees will gain a deeper understanding of emerging treatments available for hematological malignancies and blood disorders and how these new therapies can be integrated into daily practice.

Target audience

This conference is intended for primary care physicians, hematologists and medical oncologists, fellows, residents, CRNPs, PAs, nurses, and all other health care providers.

Objectives

- Discuss the cutting-edge data presented at the 2021 Annual Meeting of the ASH.
- Identify updates in molecular abnormalities that can be utilized in the diagnosis, prognosis, risk stratification, and therapy selection for patients with myeloid malignancies.
- Discuss and assess the relevant clinical trial data in clinical practice, which has the potential to improve outcomes in patients with malignant hematologic disorders including non-Hodgkin lymphoma, chronic lymphocytic leukemia (CLL), and multiple myeloma.
- Review the updates in sequencing strategies in the era of novel immunotherapies, CAR T-cell therapy, targeted therapies, and stem cell transplantation.
- Discuss the latest advances in coagulation and platelet disorders.

Agenda

| | |
|---------------------------|--|
| 7:15 – 8 a.m. | Registration, breakfast, and visit exhibits |
| 8 – 8:15 a.m. | Welcome and introductions Salman Fazal, MD |
| 8:15 – 9 a.m. | Platelet disorders Shruti Chaturvedi, MD, MSCI |
| 9 – 9:45 a.m. | Coagulation disorders Allyson Pishko, MD |
| 9:45 – 10 a.m. | Break and visit exhibits |
| 10 – 10:45 a.m. | Updates in MPN Aaron Gerds, MD, MS |
| 10:45 – 11:30 a.m. | MDS/AML updates Hetty Carraway, MD, MBA |
| 11:30 – 12:30 p.m. | Lunch and visit exhibits |
| 12:30 – 1:15 p.m. | Multiple myeloma Binod Dhakal, MD |
| 1:15 – 1:45 p.m. | Updates in B-cell lymphoma Francisco J. Hernandez-Ilizaliturri, MD |
| 1:45 – 2:15 p.m. | Updates in T-cell lymphoma Enrica Marchi, MD, PhD |
| 2:15 – 3 p.m. | CAR T-cell therapy Nirav Shah, MD |
| 3 p.m. | Evaluation/adjournment |

Course director



Salman Fazal, MD
Course Director
Assistant Professor of Medicine,
Drexel University School of Medicine
Director, Cell Transplantation Program
AHN Cancer Institute
West Penn Hospital

Disclosure of Significant Relationships with Relevant Commercial Companies

In accordance with the Accreditation Council for Continuing Medical Education (ACCME) and the policy of Allegheny General Hospital, presenters must disclose all relevant financial relationships, which in the context of their presentation(s), could be perceived as a real or apparent conflict of interest, (e.g., ownership of stock, honorarium, or consulting fees). Any identifiable conflicts will be resolved prior to the activity. Any such relationships will be disclosed to the learner prior to the presentation(s).

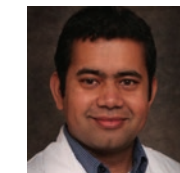
Invited faculty



Hetty Carraway, MD, MBA
Director, Leukemia Program
Vice Chair, Strategy and Enterprise Development,
Taussig Cancer Institute
Professor of Medicine,
Cleveland Clinic Lerner College of Medicine of Case Western Reserve
Hematology Oncology,
Taussig Cancer Institute
Cleveland, OH



Shruti Chaturvedi, MBBS, MSCI
Assistant Professor of Medicine
Johns Hopkins University School of Medicine
Baltimore, MD



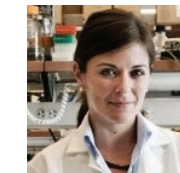
Binod Dhakal, MD
Associate Professor of Medicine, Medical College of Wisconsin
Division of Hematology/Oncology
Milwaukee, WI



Aaron T. Gerds, MD, MS
Associate Professor of Medicine, Hematology and Medical Oncology
Deputy Director for Clinical Research, Cleveland Clinic Taussig Cancer Institute
Medical Director, Case Comprehensive Cancer Center Clinical Research Office
Cleveland, OH



Francisco J. Hernandez-Ilizaliturri, MD
Chief, Lymphoma Section
Professor of Medicine,
Department of Medicine
Head, Lymphoma Translational Research Lab
Associate Professor of Immunology, Department of Immunology
Roswell Park Comprehensive Cancer Center
Clinical Professor, Department of Medicine
Jacobs School of Medicine and Biomedical Sciences
State University of New York at Buffalo
Buffalo, NY



Enrica Marchi, MD, PhD
Assistant Professor of Medicine, Microbiology, Immunology, and Cancer Biology
Co-Director, Program for T-Cell Lymphoma Research
Division of Hematology-Oncology
Department of Medicine,
University of Virginia
Charlottesville, VA



Allyson Pishko, MD
Assistant Professor, Hematology/Oncology
University of Pennsylvania
Penn Blood Disorders Center
Philadelphia, PA



Nirav Shah, MD
Assistant Professor of Medicine
Lymphoma/BMT Program
Medical College of Wisconsin
Milwaukee, WI